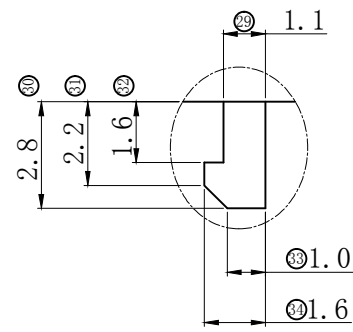
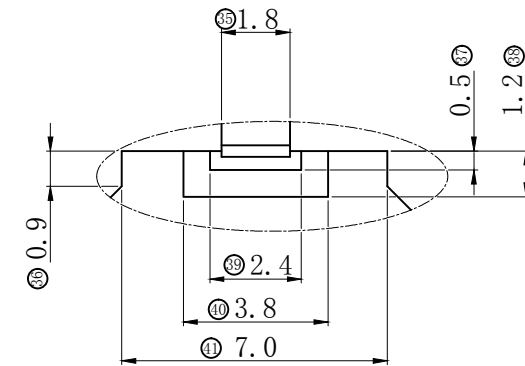
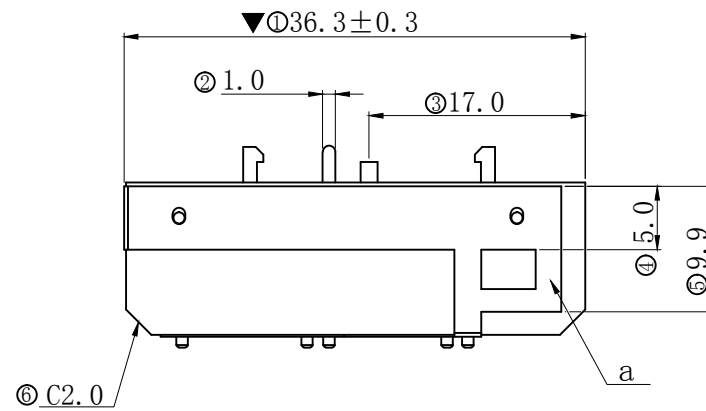


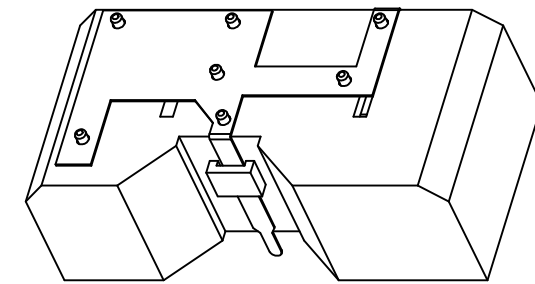
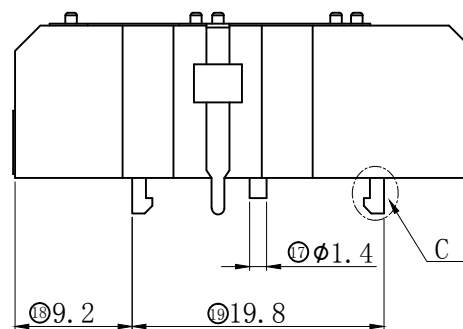
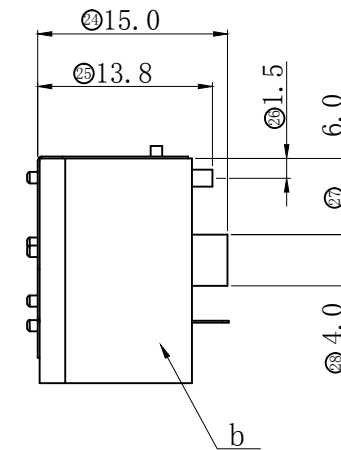
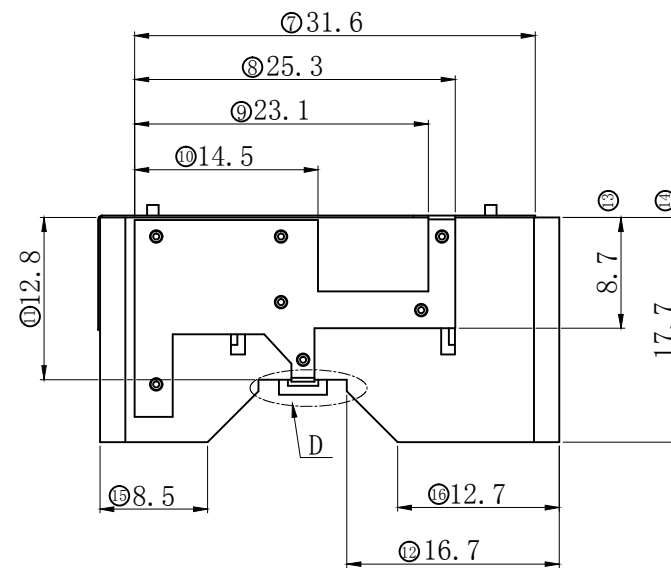
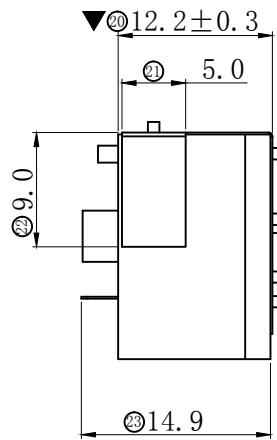
REV.	ECN NUMBER	DESCRIPTION	DATE	DRAWN	CHECKED	APPROVED
X1	ECN192130	FIRST RELEASE	10/24' 19	丁第斌	张英杰	牛宝星



DETAIL C
SCALE 3:1



DETAIL D
SCALE 3:1



NOTES:

1. After the parts assembly appearance without clear off color, must level off, clean, NO scratches, deformation, etc.
2. After the hot melt height: 0.5 MAX
3. Marked with "▼" for QC key size detection.
4. Frequency: 791-960/1710-1880 MHz
VSWR: 2.5 Max
5. Test equipment: matrix tests.
6. Product must conform to the requirements of the ROHS related ECT to test.

ITEM	PART NAME	Q'TY	PART #	DWG #	MATERIAL / FINISH
b	stents	1	605060101	351-T777-01	Ceuts02 shrapnel
a	shrapnel	1			Normal16 shrapnel



GENERAL TOLERANCE	
X. ± 0.30	XXX. ° ± 2°
. X ± 0.20	XX. ° ± 1°
. XX ± 0.10	

SCALE:	1:1
UNIT:	mm
SIZE:	A4

DRAWN:	丁第斌
CHECK:	
APPROVE:	

DATE:	10/24' 19
DWG. NO:	600-U325-01
PARTS NO. (INTENDED USE):	81800U325

TITLE:	ANE_IN_EMTC/NB_shrapnel_ Nomra16_Three Product figure
--------	---

REV.	X1
SHEET:	1/1