

1. Antenna Specification/天线标准

Antenna Specification/天线技术参数

Electrical Specification/电气特性

Item/目录	Specification/规格	Comment/ 备注
Freq. Range/频段范围	2250MHz-2300MHz/5500MHz -5850MHz	
Impedance/阻抗	50 (Ω)	
Directional/辐射方向	Omni Directional/全向天线	
Polarization/极化形式	Vertical/垂直极化	
VSWR/驻波比	≤ 3.5 / ≤ 2.0	
Peak Gain/峰值增益	2.22dBi / 6.48dBi	
Test condition/测试条件	passive test (无源测试)	
Total Efficiency/无源效率	$\geq 35\%$ / $\geq 53\%$	

Mechanical Specification/机械指标

Antenna type/天线类型	支架+钢片	
Connector Type/连接器类型	USS RF-I Plug	
RF Cable Type/射频线型号	OD1.13mm White/白色	
Dimension/尺寸	191.63*12*3mm	
Salt Spray/盐雾测试	48(H)	

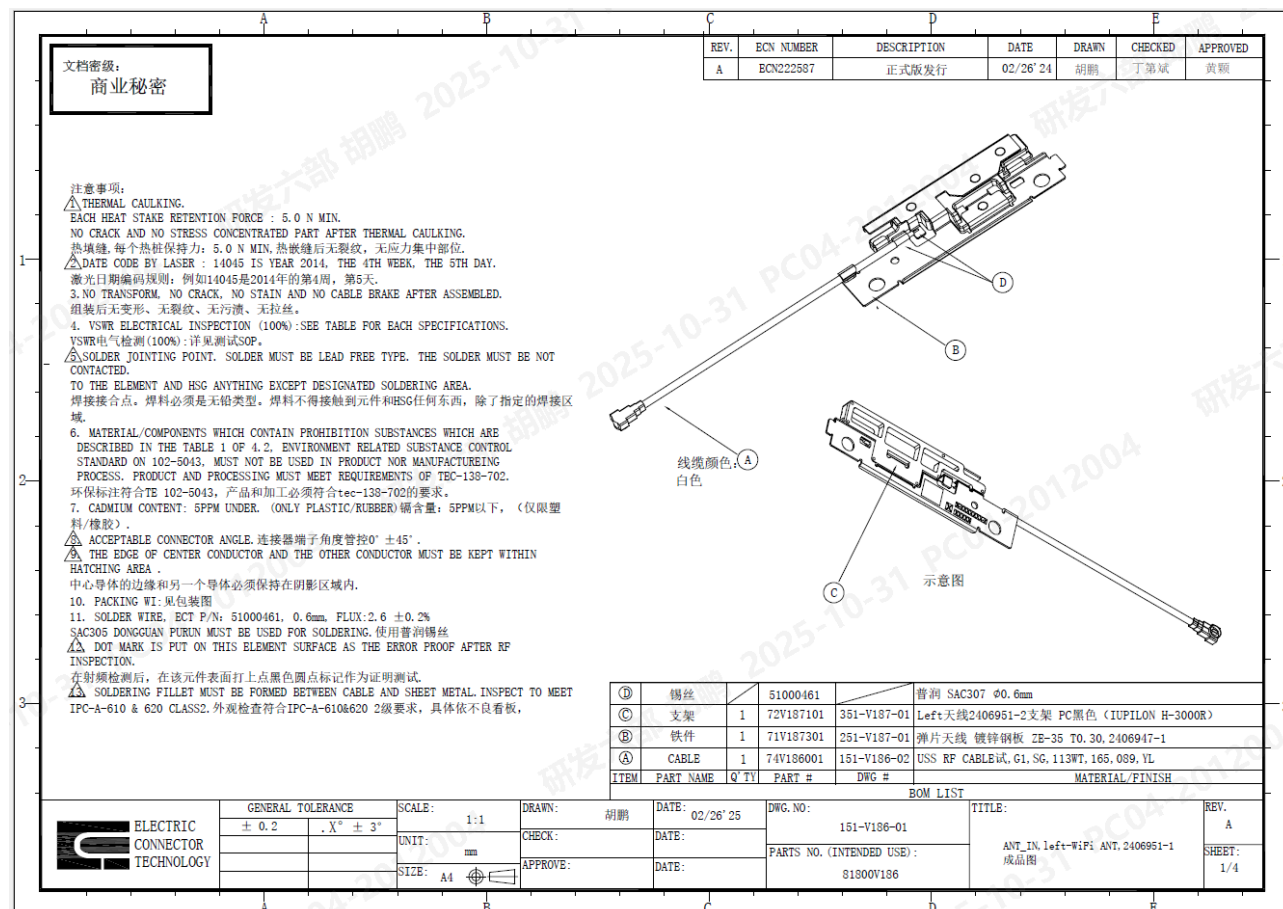
Environmental Specification /环境指标

Operating temp/工作温度	-40°C ~ +80°C	
Storage temp/存储温度	-40°C ~ +80°C	

Antenna Picture/天线图片



2. DWG/工程图纸



P/N:

81800V186

Rev.:

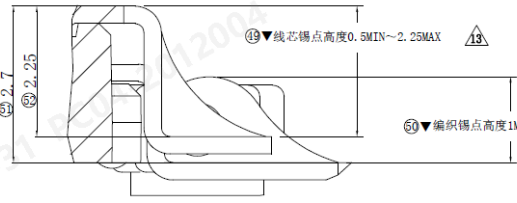
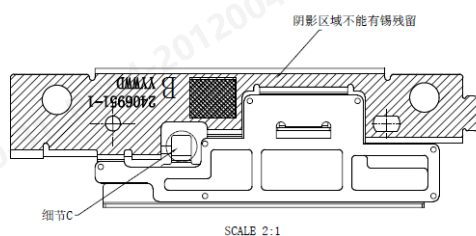
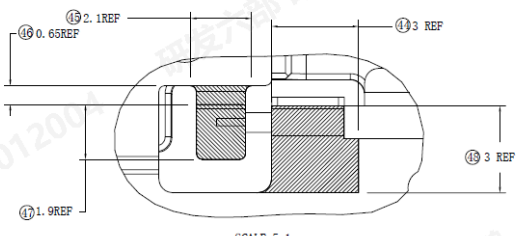
X1


Page:

5 / 9

文档密级：
商业秘密

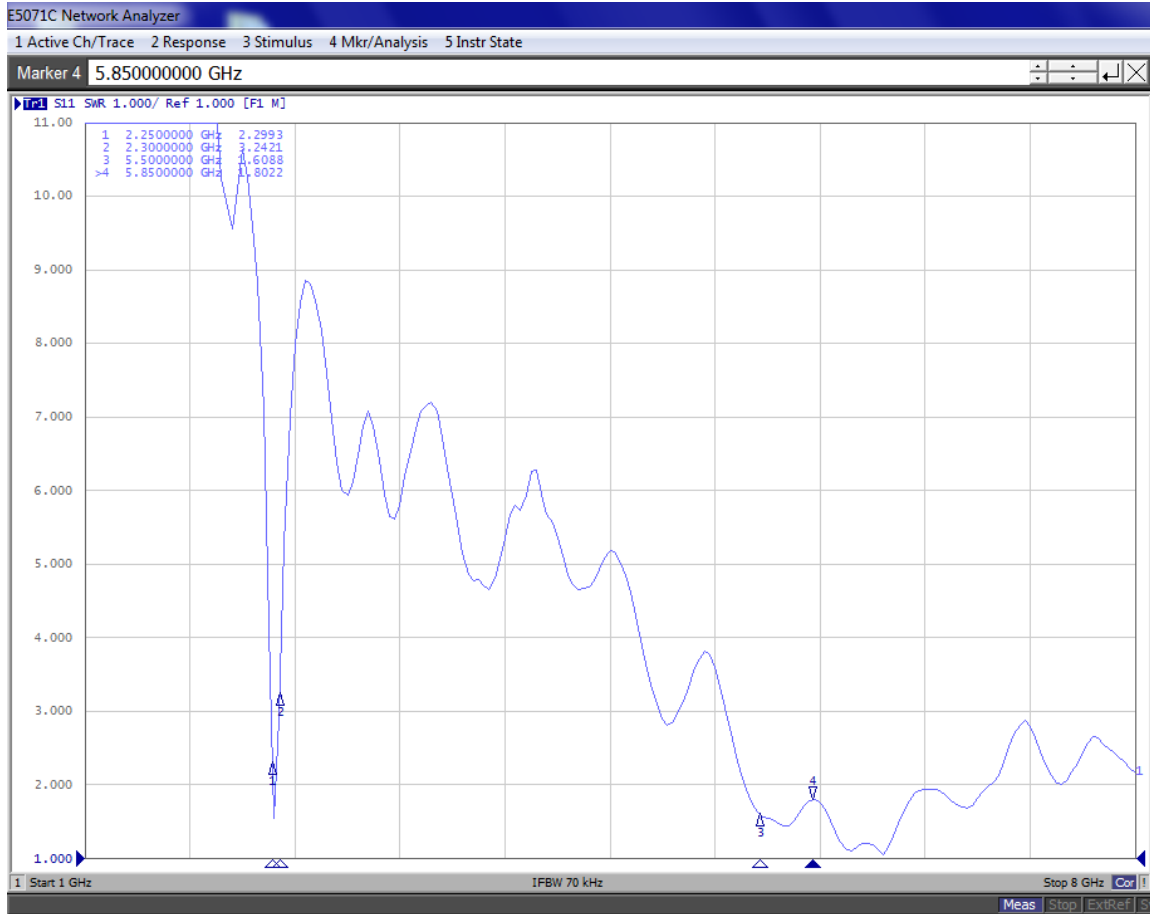
REV.	ECN NUMBER	DESCRIPTION	DATE	DRAWN	CHECKED	APPROVED
A	BCN222587	正式版发行	02/26/24	胡鹏	丁第斌	黄颖



	GENERAL TOLERANCE		SCALE:	1:1	DRAWN:	胡鹏	DATE:	02/26/25	DWG. NO.:	151-V186-01	TITLE:	REV.:
	± 0.2	.X° ± 3°	UNIT:	mm	CHECK:		DATE:		PARTS NO. (INTENDED USE):	ANT_IN, left-WiFi ANT. 2406951-1	SHEET:	A
			SIZE:	A4	APPROVE:		DATE:		81800V186		4/4	

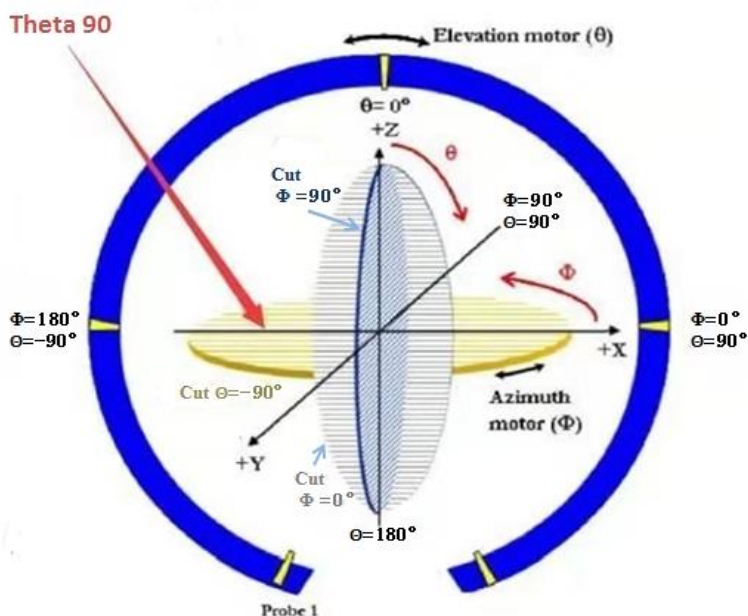
4. Antenna test result/测试结果

4.1 VSWR/驻波比

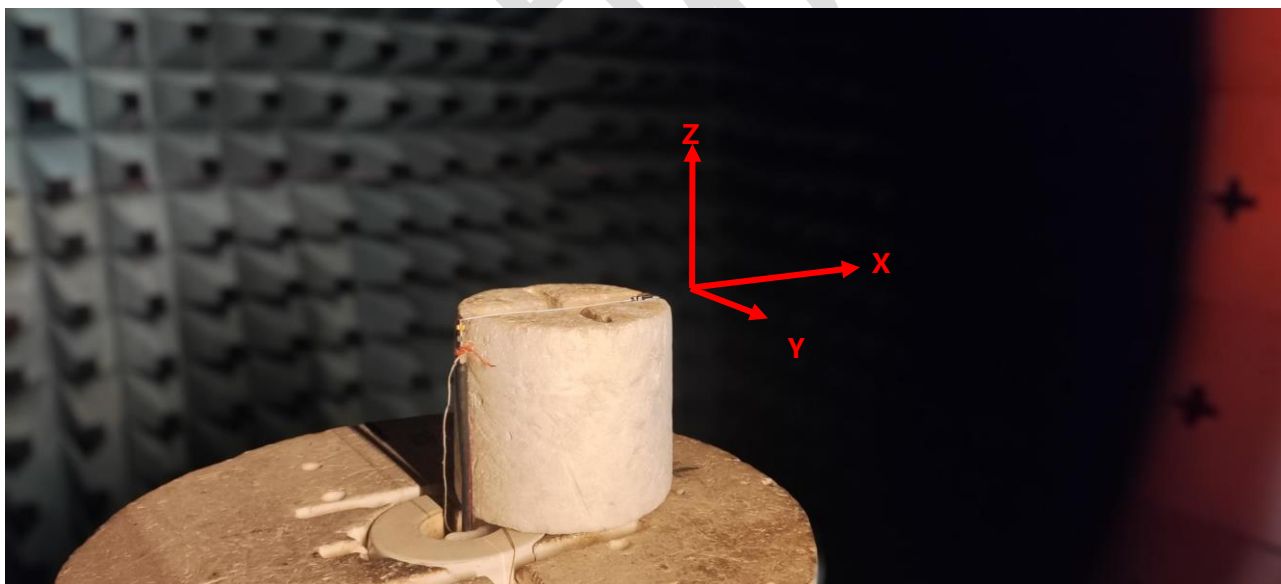


4.2 The gain and total efficiency test/增益和效率测试

4.2.1 The definition of coordinate system/坐标系定义-Satimo SG24



The coordinate system of Chamber/暗室坐标系



The production test position/天线测试放置位置

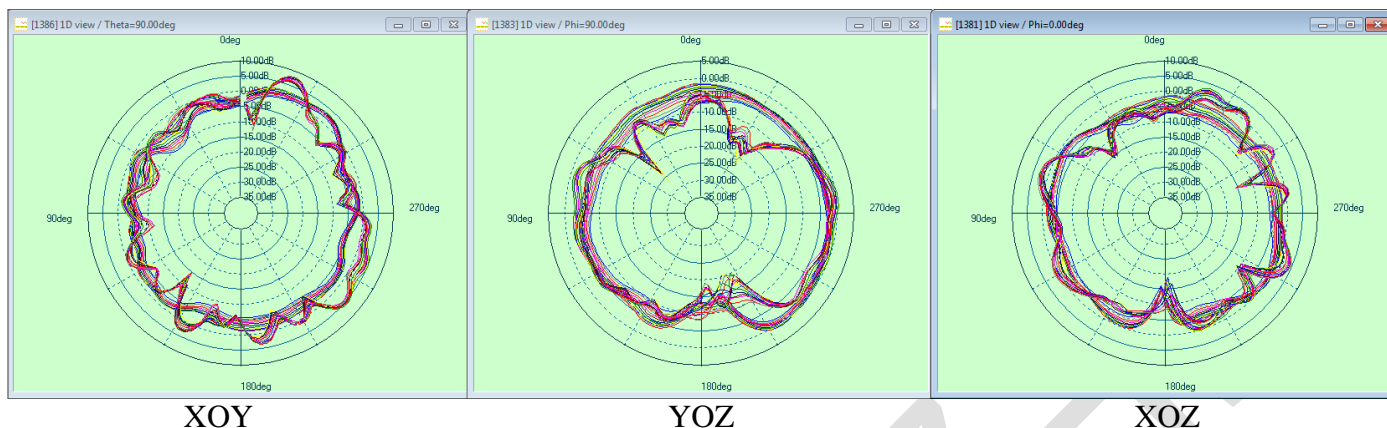
4.2.2 The test result of total efficiency and total gain/天线效率及增益测试结果

2400MHZ -2500MHZ/5150MHZ -5850MHZ

Frequency	Efficiency.%	Gain.dBi	Frequency	Efficiency.%	Gain.dBi
2250MHz	52%	1.89	5500MHz	56%	3.73
2255MHz	52%	2.10	5525MHz	61%	4.28
2260MHz	51%	2.18	5550MHz	56%	4.05
2265MHz	49%	2.22	5575MHz	55%	4.10
2270MHz	47%	2.18	5600MHz	59%	4.57
2275MHz	48%	1.92	5625MHz	57%	4.67
2280MHz	47%	1.60	5650MHz	60%	5.21
2285MHz	46%	1.49	5675MHz	63%	5.56
2290MHz	43%	1.25	5700MHz	65%	5.84
2295MHz	39%	0.99	5725MHz	65%	6.04
2300MHz	35%	0.66	5750MHz	57%	5.77
AVG.	46%	1.68	5775MHz	61%	6.23
			5800MHz	53%	5.70
			5825MHz	60%	6.33
			5850MHz	61%	6.48
			AVG.	59%	5.24

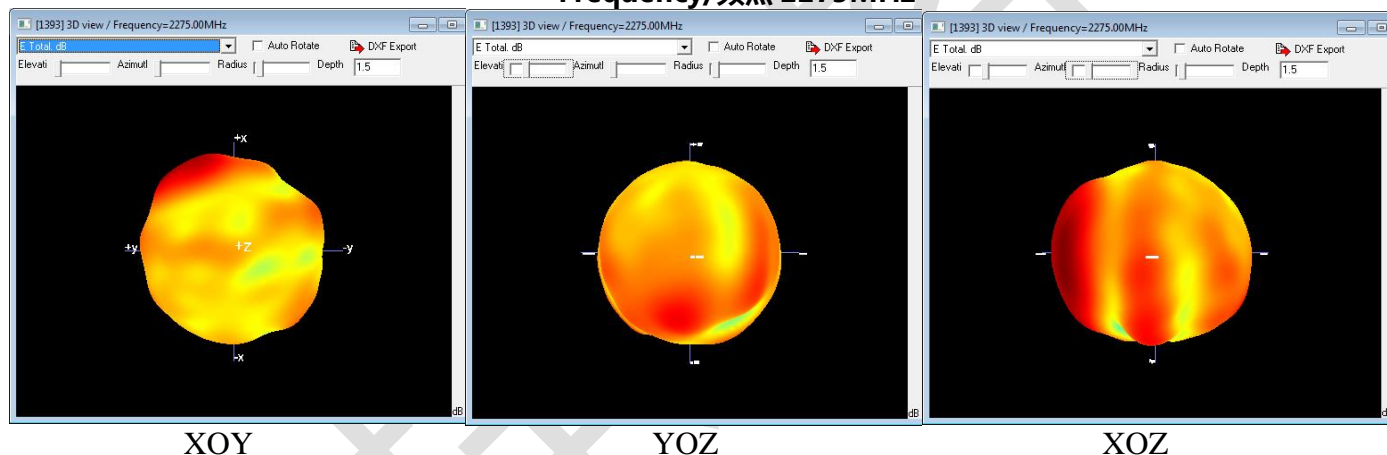
4.2.3 The antenna radiation pattern (2D view)/天线辐射方向图 (2D view)

2250MHz-2300MHz/5500MHz -5850MHz



4.2.4 The antenna radiation pattern (3D view)/天线辐射方向图 (3D view)

Frequency/频点 2275MHz



Frequency/频点 5650MHz

